



RON SMITH & ASSOCIATES, INC.



DIGITAL CRIME SCENE AND EVIDENCE PHOTOGRAPHY

Course Description

This 3-day hands-on course is designed for crime scene investigators, police officers, evidence technicians and other personnel who have the responsibility to properly document crime scenes and physical evidence through photography. The students will be provided with a thorough understanding of how cameras function, adjustments for various lighting conditions, proper exposure and composition, what photos to take and improve their skills as photographers. Students with limited familiarity of photography along with those who have some experience taking photos but want to improve their skills and develop a better understanding of why and how to adjust camera settings will benefit. Attendees will be able to take the camera off the automatic settings and improve images needed for investigations and court.

Instruction includes:

- Fundamentals of photography
- Understanding of basic camera operations
(shutter speeds, aperture, white balance, exposure adjustments, ISO, etc)

Target Audience

This 3-day hands-on course is designed for crime scene investigators, police officers, evidence technicians and other personnel who have the responsibility to properly document crime scenes and physical evidence through photography. The students will be provided with a thorough understanding of how cameras function, adjustments for various lighting conditions, proper exposure and composition, what photos to take and improve their skills as photographers.

Should be Able to Perform

Upon completion of the course, attendees will be able to:

- Identify when evidence photography is needed and which photos to take.
- Identify and list what photographic equipment is necessary for evidence photography.
- Identify and adjust various controls on the camera and flash.
- Describe proper archiving and documentation photographic evidence.
- Describe and demonstrate evidence comparison photography and use of scales.
- Demonstrate proper adjustments of ISO, shutter speed, aperture and exposure.
- Identify and adjust image quality and file sizes needed for evidence photography.
- Demonstrate various flash techniques and describe when to use them.
- Demonstrate proper procedures for footwear, tire and impression evidence photography
- Demonstrate use of the light meter to obtain proper exposure
- Explain how camera settings effect exposure and composure
- Problem solve when ideal lighting conditions don't exist.



Tuition: \$450.00
3 Days

Daily Schedule

	Day 1	Day 2	Day 3
Hour 1	Registration / Course Overview / Introductions	ISO Settings	Painting with Light
Hour 2	Introduction to Crime Scene Photography	Light Meter - Usage	Scales & Scene Markers
Hour 3	Camera Controls & Basic Mechanics	Histograms, Shooting Data, White Balance	Field of View, Composure, Rule of 3
Hour 4	Camera Controls continued	Introduction to Flash Photography	Accident Scenes, Injury Photos
Lunch	Lunch	Lunch	Lunch
Hour 5	Lens Functions, Digital Media	2 & 3 Dimensional Footwear & Tire Impression Photography	Archiving Images, Tips & Tricks
Hour 6	Image Quality & Size, Exposure Compensation		"Bluestar" (luminol) Photography
Hour 7	Shutter Speed	Flash, Glare & Window Glass	Macro/Close Up, Morgue or Death Scenes
Hour 8	Aperture (F-Stops)	Time Exposure	Surveillance, Closing Remarks, Certificates

Must Bring to Class

Students should wear appropriate business casual clothing for practical exercises conducted both inside and outdoors. Students are asked to bring the following:

- Digital Camera (digital SLR preferred) and instruction manual
- Normal lens (if using an SLR) approximately 35-50mm or zoom lens capable of that range
- Macro lens if available
- Batteries and charging cables for camera and flash
- Digital media (2)
- Off camera flash and instruction manual
- Remote flash cord to connect flash to camera
- Tripod (if available)
- Flashlight

These items are not required to attend class but students are strongly encouraged to bring them in order to enhance their learning experience.

Online Class Registration

Visit us at: www.RonSmithandAssociates.com and register today!

BEFORE



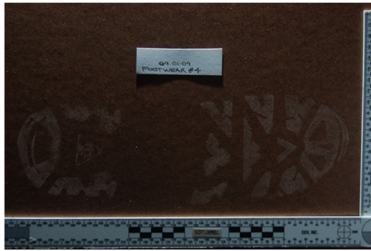
AFTER



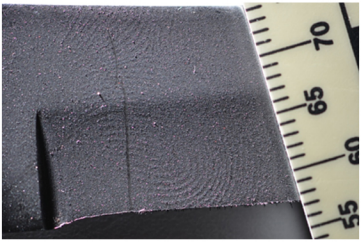
BEFORE



AFTER



BEFORE



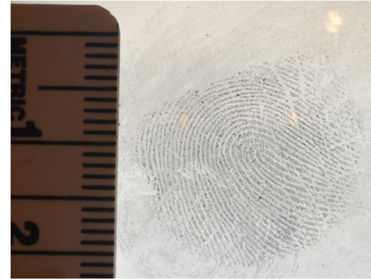
AFTER



BEFORE



AFTER



BEFORE



AFTER



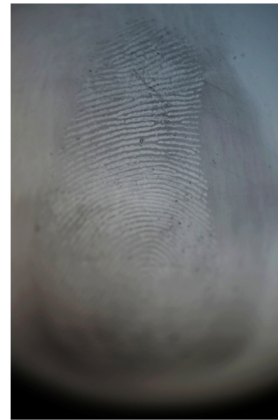
BEFORE



AFTER



BEFORE



AFTER



BEFORE



AFTER

